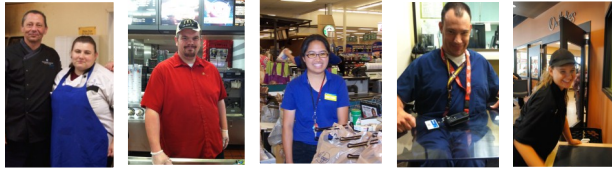




Supported Employment



What is Supported Employment?

New Perceptions' Supported Employment Program offers assistance with job placement and support to individuals with physical, intellectual/developmental disabilities and mental health diagnoses.

Support For The Participant and You

Supported Employment Specialists are the liaison between the employer and employee, assisting with on-the-job training, troubleshooting, and coaching as needed.

Benefits to Your Business

- Hiring individuals qualified for work, reducing your training and recruiting costs
- Dedicated associates with equal or higher performance rates
- A more diversified workforce
- Showing your community support
- Tax incentives

Contact

Paul Meisenhelder, Manager
pmeisenhelder@newperceptions.org

Deanna Brunsman, Assistant Manager
dbrunsman@newperceptions.org

What Businesses Are Saying

The employees have been great, very well suited and surrounded to perform their duties... It has also made our community engagement stronger by hiring local people with disabilities. The coaches [have] provided great support throughout the employment. I could not be happier working with such a well structured organization.

- Philippe Audax, Executive Chef
Aramark



[Our team member] has proven to be a responsible and mature employee of the St. Elizabeth Laboratory. He is always eager to take on any tasks that are given to him and has proven to be a valuable asset to the laboratory. He works well with others and takes direction very well.

- Mary Springelmeyer, Office Manager
St. Elizabeth Laboratory

New Perceptions
1 Sperti Drive, Edgewood, KY
(859) 344-9322
www.newperceptions.org

